



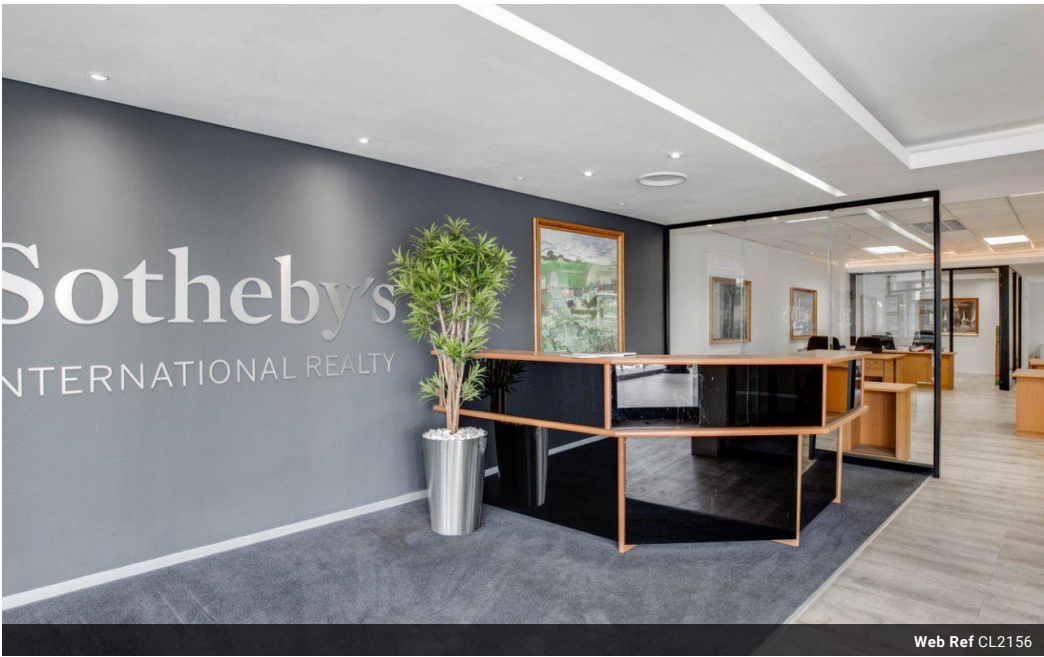
Rhonwen Lane
0794965240
rhonwenl@sothebysrealty.co.za

Contact Craighall Park

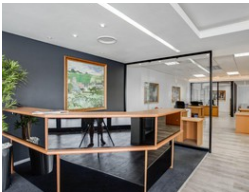
011 8868070

366 Jan Smuts Ave
Craighall
2196

182m² Office To Let in Rivonia



Web Ref CL2156



R137.4 per m²

Gross Monthly Rental R25,000 Excl. VAT

0 9

Rental: R25 000 per month

Executive office space available in the sought after Rivonia Village Shopping Centre where only a few can call work place. This spacious 182sqm office location offers a welcoming reception, glass-enclosed airconditioned boardroom, ample space for an open plan design, with two more glass-enclosed executive offices over looking the open floor plan as well as a spacious kitchen and a large storeroom. Secure with 9 parking bays and ample parking in the Centre.

Features

Building Name		Rivonia Village Shopping Centre	
Zoning		Mixed Use	
Interior		Exterior	
Air Conditioning	Yes	Security	Yes
		Open Parking Bays	9
		Sizes	
		Floor Size	182m²

